

STORAGE

www.sturdy.com.au

GENERAL FURNITURE



BOOKCASES

CODE	SIZES	DESCRIPTION
BCT-9090-32	900H x 900W x 324D	Open - 2 adjustable shelves
BCT-12090-32	1200H x 900W x 324D	Open - 3 adjustable shelves
BCT-18090-32	1800H x 900W x 324D	Open - 4 adjustable shelves
BCT-10090-35	1000H x 900W x 350D	Open - 2 adjustable shelves
BCT-15090-35	1500H x 900W x 350D	Open - 3 adjustable shelves
BCT-CL1509035	1500H x 900W x 350D	Closed - full -adjustable shelves
BCT-FG1509035	1500H x 900W x 350D	Closed / full glass - adjustable shelves
BCT-PG1509035	1500H x 900W x 350D	Closed / part glass- adjustable shelves

SPECIFICATIONS

25mm melamine top and sides with ABS edging
 18mm melamine back and bottom with ABS edging
 Adjustable feet
 Other sizes available
 Different styles available



Approved Supplier
 SCCB Contract No. 1006
 20/10/2009 - 8/02/2013

SLIDING DOOR BUFFET OR CREDENZAS

CODE	SIZES	DESCRIPTION
CRT-9045-72	900W x 450D x 720H	Sliding door
CRT-12045-72	1200W x 450D x 720H	Sliding door
CRT-15045-72	1500W x 450D x 720H	Sliding door
CRT-18045-72	1800W x 450D x 720H	Sliding door
CRT-9045-72CHD	900W x 450D x 720H	Closed Hinged Door
CRT-9045-72CSD	900W x 450D x 720H	Closed Sliding Door
CRT-9045-72WUO	900W x 450D x 720H	Wing Unit Open

SPECIFICATIONS

25mm Melamine top and sides with ABS edging
 18mm Melamine construction with ABS edging
 D or Bow handles
 Sliding doors with optional hinged door add (H) to code
 One adjustable shelf



shown with bow handles



Approved Supplier
 SCCB Contract No. 1006
 20/10/2009 - 8/02/2013

STORAGE

www.sturdy.com.au

FILING



shown with bow handles

VERTICAL FILING CABINET

CODE	SIZES	DESCRIPTION
FCT-2DRAW	460W x 600D x 675H	2 drawer melamine
FCT-3DRAW	460W x 600D x 968H	3 drawer melamine
FCT-4DRAW	460W x 600D x 1261H	4 drawer melamine

SPECIFICATIONS

25mm melamine tops with abs edging
18mm melamine construction with ABS edging
Metal drawer runners
D or Bow handles in saturn chrome



Approved Supplier
SCCB Contract No. 1006
20/10/2009 - 8/02/2013



shown with bow handles

LATERAL FILING CABINET

CODE	SIZES	DESCRIPTION
LCT-2DRAW	825W x 600D x 675H	2 drawer melamine
LCT-3DRAW	825W x 600D x 968H	3 drawer melamine
LCT-4DRAW	825W x 600D x 1261H	4 drawer melamine
LFT-9060-72	900W x 600D x 720H	2 drawer melamine

SPECIFICATIONS

25mm melamine tops with abs edging
18mm melamine construction with ABS edging
Metal drawer runners
D or Bow handles in saturn chrome



Approved Supplier
SCCB Contract No. 1006
20/10/2009 - 8/02/2013



shown with bow handles

MOBILE PEDESTAL

CODE	SIZES	DESCRIPTION
MPT-4DRAW	457W x 675H x 550D	4 Drawer
MPT-2D+1F	457W x 675H x 550D	2 Drawer + File
MPT-2FILE	457W x 675H x 550D	2 File Drawer

SPECIFICATIONS

Add L to code - multi drawer lock
18mm melamine construction with ABS edging
D or Bow handles metal drawer runners
5 casters per unit



Approved Supplier
SCCB Contract No. 1006
20/10/2009 - 8/02/2013

STORAGE

www.sturdy.com.au

CUPBOARDS



shown with bow handles

STATIONERY CUPBOARDS

CODE	SIZES	DESCRIPTION
CBT-9090-45	900H x 900W x 450D	2 adjustable shelves
CBT-10590-45	1200H x 900W x 450D	2 adjustable shelves
CBT-150-90-45	1500H x 900W x 450D	3 adjustable shelves
CBT-18090-45	1800H x 900W x 450D	4 adjustable shelves
CBT-15090-35	1500H x 900W x 350D	3 adjustable shelves
CBT-18090-35	1800H x 900W x 350D	4 adjustable shelves

SPECIFICATIONS

25mm melamine top and sides with ABS edging
 18mm melamine back, bottom & doors with ABS edging
 D or Bow handles
 Stationery Cupboards - adjustable feet
 Other sizes available
 Different styles available



Approved Supplier
 SCCB Contract No. 1006
 20/10/2009 - 8/02/2013



shown with bow handles

COAT CUPBOARDS

CODE	SIZES
CCT-18045-45	1800H x 450W x 450D
CCT-18090-45	1800W x 900W x 450D
CCT-15056-45	1500H x 450W x 560D
CCT-21060-60	2100H x 600W x 600D

SPECIFICATIONS

25mm melamine top and sides with ABS edging
 18mm melamine back, bottom & doors with ABS edging
 D or Bow handles
 Other sizes available
 Different styles available



Approved Supplier
 SCCB Contract No. 1006
 20/10/2009 - 8/02/2013

STORAGE

www.sturdy.com.au

WALL UNITS/PIGEONHOLES



WALL UNITS

CODE	SIZES	DESCRIPTION
WUT-8090-40OP	900W x 400D x 800H	Overhead wall unit, open
WUT-8090-40CD	900W x 400D x 800H	Overhead wall unit, hung, closed with doors



Approved Supplier
SCCB Contract No. 1006
20/10/2009 - 8/02/2013



MAGAZINE DISPLAY UNIT

CODE	SIZES	DESCRIPTION
MRT-1200	1200W x 440D x 1200H	magazine display - 1200mm open
MRT-1500	1500W x 440D x 1200H	magazine display - 1500mm open
MRT-1800	1800W x 440D x 1200H	magazine display - 1800mm open

OPTIONS

Add SD to end of code for sliding doors
Add L to end of code for multi draw lock (sliding doors)
Add PG to end of code for pigeon hole

SPECIFICATIONS

18mm construction with ABS edging.
D or Bow handles for Sliding doors



Approved Supplier
SCCB Contract No. 1006
20/10/2009 - 8/02/2013



PIGEON HOLES

CODE	DESCRIPTION
PHT-40HOLE	40 hole
PHT-20HOLE	20 hole

SPECIFICATIONS

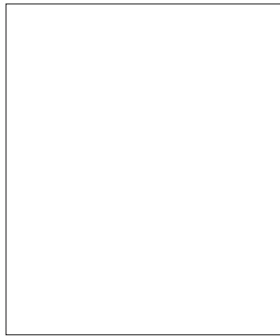
18mm construction with ABS edging
Depths available 324mm, 450mm or 600mm
Widths can be 900mm, 1200mm, 1500mm or 1800mm
Available in 25mm or 33mm thick melamine
Other sizes available upon request



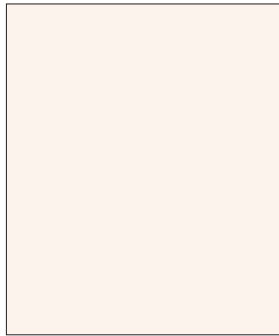
Approved Supplier
SCCB Contract No. 1006
20/10/2009 - 8/02/2013

COLOURS

MELAMINE



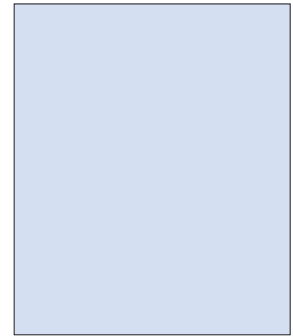
White



Light Beige



Beige



Blue



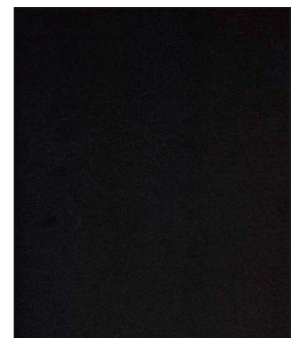
Light Grey



Dark Grey



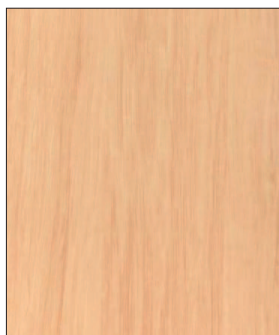
Riverstone



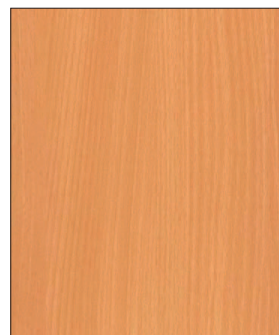
Black



Birch



Young Beech



Beech



Cherry

These colours are only approximate due to printing colour restrictions.

 	Sturdy Framac pursue a policy of continuous improvement and reserve the right to introduce modification when required and to withdraw models without previous notification.		
	Sturdy Components Pty Limited trading as Sturdy Framac www.sturdy.com.au	95 Gow Street, Padstow NSW 2211. Australia Telephone (02) 8760 8300 Facsimile (02) 9707 1081 email sales@sturdy.com.au	 