

# www.sturdy.com.au STEP STOOLS

## ACCESSORIES



**Code :** STOOL-38.5CM

**Description :** PLASTIC 2-STEP STOOL

- Ribbed steps for extra grip
- Non-slip rubber footing to ensure a secure platform
- Convenient light-weight construction makes this stool easily portable
- Sturdy, strong platform to access those hard-to-reach places
- Ideal for the home, office, warehouse
- Conforms to Australian Standards ASTM F1561
- 12 month warranty
- Sturdy, strong platform to access those hard-to-reach places

**Colour :** Grey

**Weight capacity :** 113kg / 250lbs

**Dimensions :** Vertical Height: 38.5cm  
Top Width: 35.3cm  
Bottom Width: 42.5cm



**Code :** KWIK-EZEE

**Description :** KWIK-EZEE STEP LADDER 2-STEP

- A lightweight, mobile, strong, folding mini step ladder
- Made from lightweight, durable and strong hi-grade aluminium for long lasting use
- A safer way to get to those out-of-reach places
- Moves smoothly on spring-loaded maintenance free castors which retract once weight is applied
- Provides a steady platform for access to shelves and high places
- Castors rotate 360°
- Ideal for use in the office, shop, library, warehouse
- 12 month warranty

**Colour :** Aluminium

**Weight capacity :** 150kg / 330lbs

**Dimensions :** (w)505mm (h)198mm (l)430mm  
Height: 45cm  
Top Width: 34Wx20Dcm  
Bottom Width: 45cm



Sturdy Framac pursue a policy of continuous improvement and reserve the right to introduce modification when required and to withdraw models without previous notification.

Sturdy Components Pty Limited trading as  
**Sturdy Framac**  
[www.sturdy.com.au](http://www.sturdy.com.au)

95 Gow Street, Padstow  
NSW 2211, Australia  
Telephone 02 9790 3500  
Facsimile 02 9707 1081  
email [sales@sturdy.com.au](mailto:sales@sturdy.com.au)



# www.sturdy.com.au STEP STOOLS

## ACCESSORIES



**Code :** STOOL-40CM

**Description :** ROLLING SAFETY STEP STOOL 2-STEP

- Metal construction
- A safer way to get to those out-of-reach places
- Includes a durable ribbed rubber non-slip surface
- This heavy duty step stool is fitted with 3 silent spring-loaded castors to glide easily into place when kicked
- Castors retract when weight is applied, providing a secure platform
- No oiling required, so step stool is maintenance free
- Bright, durable finish is scratch resistant and protects against rust
- Conforms to EU standards and is quality assured
- 12 month warranty

**Colour :** Grey

**Weight capacity :** 150kg

**Dimensions :** Height: 40cm  
Top Width: 28cm  
Bottom Width: 42cm



**Code :** STOOL-26.5CM

**Description :** ROLLING STOP'N'STEP 1-STEP

- Plastic single-step step stool
- A safer way to get to those out-of-reach places
- Includes durable, ribbed non-slip surface
- Moves smoothly on spring-loaded maintenance free castos which retract once weight is applied
- Provides a steady platform for access to shelves and high places
- Ideal for use in the office, shop, library, warehouse
- Conforms to EU safety standards and is quality assured (ISO9002)
- 12 month warranty

**Colour :** Grey

**Weight capacity :** 150kg / 330lbs

**Dimensions :** Height: 26.5cm  
Top Width: 28cm  
Bottom Width: 38cm



Sturdy Framac pursue a policy of continuous improvement and reserve the right to introduce modification when required and to withdraw models without previous notification.

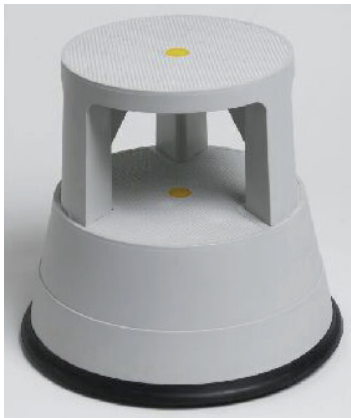
Sturdy Components Pty Limited trading as  
**Sturdy Framac**  
www.sturdy.com.au

95 Gow Street, Padstow  
NSW 2211, Australia  
Telephone 02 9790 3500  
Facsimile 02 9707 1081  
email sales@sturdy.com.au



# www.sturdy.com.au STEP STOOLS

## ACCESSORIES



**Code :** STOOL-39CM

**Description :** ROLLING STOP'N'STEP 2-STEP

- Plastic 2-step step stool
- A safer way to get to those out-of-reach places
- Includes durable, ribbed non-slip surface
- Moves smoothly on spring-loaded maintenance free castors which retract once weight is applied
- Provides a steady platform for access to shelves and high places
- Ideal for use in the office, shop, library, warehouse
- Conforms to EU safety standards and is quality assured (ISO9002)
- 12 month warranty

**Colour :** Grey

**Weight capacity :** 150kg

**Dimensions :** Height: 39cm  
Top Width: 28.5cm  
Bottom Width: 41.5cm



Sturdy Framac pursue a policy of continuous improvement and reserve the right to introduce modification when required and to withdraw models without previous notification.

Sturdy Components Pty Limited trading as  
**Sturdy Framac**  
[www.sturdy.com.au](http://www.sturdy.com.au)

95 Gow Street, Padstow  
NSW 2211. Australia  
Telephone 02 9790 3500  
Facsimile 02 9707 1081  
email [sales@sturdy.com.au](mailto:sales@sturdy.com.au)

