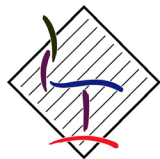


MOBILE

www.sturdy.com.au

PEDESTAL CABINETS



2 DRAWER + FILE

MPM-MOB2-1



Flat front (add F to end of code)



Handle front (add H to end of code)



Flat front (add F to end of code)



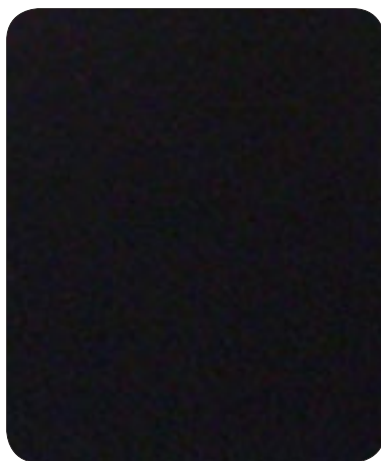
DIMENSIONS	Description	Size	Code
	2 Draw + File	630H x 400W x 500D	MPM-MOB2-1
FEATURES	<ul style="list-style-type: none"> • Sleek european design with the emphasis on space and aesthetics • Lockable all steel fully welded construction • 3 Drawer only in stock • File drawer has full extension ball bearing runners with 25kg capacity • Other drawers have metal runners self closing feature • Powder coat finish • Fifth castor to prevent tipping. Reinforced base • Side pull or full width handle available • Stock colours grey and graphite ripple • 5 Year warranty 		

COLOURS

STEEL FURNITURE



BEIGE



BLACK



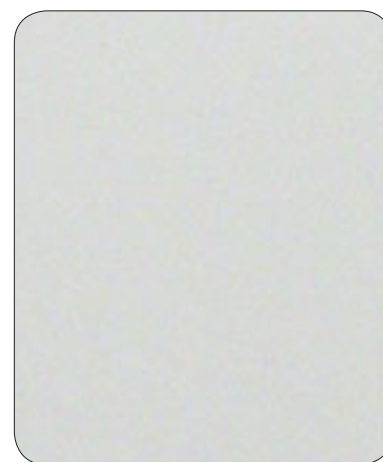
GRAPITE RIPPLE



GREY



SILVER



WHITE

Images are a digital representation. Colour may vary from pictures shown

Sturdy has made every effort to display as accurately as possible the colours that appear on this site. However, as the actual colours you see will depend on your monitor, we cannot guarantee that your monitor's display of any colour will be accurate

 	<p>Sturdy Framac pursue a policy of continuous improvement and reserve the right to introduce modification when required and to withdraw models without previous notification.</p>		
	<p>Sturdy Components Pty Limited trading as Sturdy Framac www.sturdy.com.au</p>	<p>95 Gow Street, Padstow NSW 2211. Australia Telephone (02) 8760 8300 Facsimile (02) 9707 1081 email sales@sturdy.com.au</p>	 