

TASK RANGE



EXTRA HIGH BACK	
WA40	non tilt seat
WA46	3 paddle
WA49	syncro

WA46 shown



HIGH BACK	
WA30	non tilt seat
WA36	3 paddle
WA39	syncro

WA36 shown



MEDIUM BACK	
WA20	non tilt seat
WA26	3 paddle
WA29	syncro

WA20 shown



A5
Height adjustable arm



A6
Tulip arms



DRAFTING	
WA20D3	non tilt seat
WA26D3	3 paddle

WA20D3 shown



Approved Supplier
SCCB Contract No. 1006
20/10/2009 - 8/02/2013

L6



Not all models have AFRDI certification. AFRDI certifies for select models available upon request.

DIMENSIONS	Back Size		Seat Size	Height	
	Extra High	495 W x 580 H	515 W x 480 D	Typist / Clerical	470 - 600
	High	440 W x 500 H		Drafting standard	580 - 780
Medium	415 W x 400 H	Drafting high lift		650 - 910	
OPTIONS	Option codes must be placed in alphabetical order after chair code.		C5 - Glides D1 - Aluminium footring /Standard drafting D2 - Aluminium footring /High Lift drafting D3 - Black plastic footring /Standard drafting D4 - Black plastic footring /High lift drafting	E - Ergosit seat cushion S2 - Small seat (500W x 460D) S6 - Extra large seat (560W x 500D) SS - Slide seat option	

OPTIONS

TASK RANGE

Option codes must be placed in alphabetical order after chair code.



A5
Height adjustable arm



A6
Tulip arm



B1
Polished aluminium



C1
Brake castors



C2
Brake castors



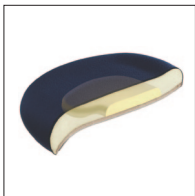
C5
Glides



D1 & D2
Aluminium footring



D3 & D4
Black plastic footring



E
Ergosit seat cushion



S2
Small seat (500W x 460D)



S6
Large seat (560W x 500D)



SLIDE SEAT INSTRUCTIONS

The Slide Seat mechanism allows the seat to slide forward increasing the seat depth by 50mm. It offers 5 locking positions.

As depth between the back and seat increases it allows larger people more comfort.

To operate simply lift the handle and slide the seat forward or backward to adjust into a one of the 5 locking positions. The mechanism should find each locking position without any force necessary.

