

TASK RANGE



HIGH BACK	
VN30M2	non tilt seat
VN35M2	tilt seat
VN36M2	3 paddle mech
VN39M2	syncro

VN30M2A5 shown



MEDIUM BACK	
VN20M2	non tilt seat
VN25M2	tilt seat
VN26M2	3 paddle mech
VN29M2	syncro

VN20M2 shown



MEDIUM BACK	
VN20M2	non tilt seat
VN25M2	tilt seat
VN26M2	3 paddle mech
VN29M2	syncro

VE26A5M2 shown



A14
Loop arm



DRAFTING	
VN20D3M2	non tilt seat
VN26D3M2	3 paddle mech

VN20D3M2 shown



Approved Supplier
SCCB Contract No. 1006
20/10/2009 - 8/02/2013

DIMENSIONS	Back Size	Seat Size	Height
	High 470 W x 570 H Medium 460 W x 470 H	500 W x 540 D	Typist / Clerical 470 - 600 Drafting standard 580 - 780 Drafting high lift 650 - 910
OPTIONS	Option codes must be placed in alphabetical order after chair code. A5 - Height adjustable arms A14 - Standard loop arms B1 - Polished aluminium base C1 - Brake castors (carpet floors) C2 - Brake castors (hard floors)	C5 - Glides D1 - Aluminium footring /Standard drafting D2 - Aluminium footring /High lift drafting D3 - Black plastic footring /Standard drafting D4 - Black plastic footring /High lift drafting	E - Ergosit seat cushion LL - Lever lock back upright M2 - Ratchet mechanism S6 - Extra large seat (560W x 500D) SS - Slide seat option

OPTIONS

TASK RANGE

Option codes must be placed in alphabetical order after chair code.



A5
Height adjustable arm



A14
Loop arm



B1
Polished aluminium



C1
Brake castors



C2
Brake castors



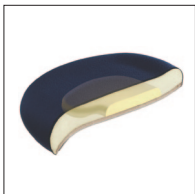
C5
Glides



D1 & D2
Aluminium footring



D3 & D4
Black plastic footring



E
Ergosit seat cushion



M2
Ratchet mechanism



S6
Large seat (560W x 500D)



SLIDE SEAT INSTRUCTIONS

The Slide Seat mechanism allows the seat to slide forward increasing the seat depth by 50mm. It offers 5 locking positions.

As depth between the back and seat increases it allows larger people more comfort.

To operate simply lift the handle and slide the seat forward or backward to adjust into a one of the 5 locking positions. The mechanism should find each locking position without any force necessary.

