

STELLAR

www.sturdy.com.au

TASK RANGE



CLERICAL	
ST20	non tilt seat
ST25	tilt seat
ST26S2	3 paddle mech
ST29	syncro

ST20 shown



VDU BACK	
SV20	non tilt seat
SV25	tilt seat
SV26S2	3 paddle mech
SV29	syncro

SV20 shown



CLERICAL - LOOP ARMS	
ST20A5	non tilt seat
ST25A5	tilt seat
ST26A5	3 paddle mech
ST29A5	syncro

ST20A5 shown



A2
Loop arm



DRAFTING	
ST20D3	non tilt seat
ST25D3	tilt seat

ST20D3 shown



Approved Supplier
SCCB Contract No. 1006
20/10/2009 - 8/02/2013



Not all models have
AFRDI certification.
AFRDI certificates for
select models available
upon request.

DIMENSIONS	Back Size	Seat Size	Height
	Clerical 390 W x 360 H VDU 385 W x 355 H	480 W x 465 D	Typist / Clerical 450 - 580 Drafting standard 560 - 760 Drafting high lift 630 - 890
OPTIONS	Option codes must be placed in alphabetical order after chair code. A2 - Loop arms A5 - Height adjustable arms B1 - Polished aluminium base C1 - Brake castors (carpet floors) C2 - Brake castors (hard floors)	C5 - Glides D1 - Aluminium footring /Standard drafting D2 - Aluminium footring /High Lift drafting D3 - Black plastic footring /Standard drafting D4 - Black plastic footring /High lift drafting	E - Ergosit seat cushion S2 - Optional Seat (500W x 460D) - 3 paddle S5 - Large seat (515W x 480D) S6 - Extra large seat (560W x 500D) S5 - Slide seat option

OPTIONS

TASK RANGE

Option codes must be placed in alphabetical order after chair code.



A5
Height adjustable arm



A2
Loop arm



B1
Polished aluminium



C1
Brake castors



C2
Brake castors



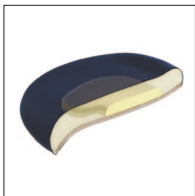
C5
Glides



D1 & D2
Aluminium footring



D3 & D4
Black plastic footring



E
Ergosit seat cushion



S2
Optional Seat (500W x 460D)



S5
Large seat (515W x 480D)



S6
Extra large seat
(560W x 500D)



SLIDE SEAT INSTRUCTIONS

The Slide Seat mechanism allows the seat to slide forward increasing the seat depth by 50mm. It offers 5 locking positions.

As depth between the back and seat increases it allows larger people more comfort.

To operate simply lift the handle and slide the seat forward or backward to adjust into a one of the 5 locking positions. The mechanism should find each locking position without any force necessary.

