

TASK RANGE



HIGH BACK	
QU30	non tilt seat
QU36	3 paddle
QU39	syncro

QU39SS shown



MEDIUM BACK	
QU20	non tilt seat buttons
QU25	tilt seat buttons
QU26	3 paddle mech
QU29	syncro buttons

QU20 shown



MEDIUM / HIGH BACK LOOP ARMS		
QU20A7	QU30A7	non tilt seat
QU25A7		tilt seat
QU26A7	QU36A7	3 paddle mech
QU29A7	QU39A7	syncro buttons

QU20A7 shown



A5
Height adjustable arm



DRAFTING	
QU20D3	non tilt seat buttons
QU25D3	tilt seat buttons



Approved Supplier
SCCB Contract No. 1006
20/10/2009 - 8/02/2013



L6
Not all models have AFRDI certification. AFRDI certifies for select models available upon request.

DIMENSIONS		Back Size	Seat Size	Height
		High 465 W x 480 H Medium 415 W x 410 H	515 W x 480 D (high back) 480 W x 465 D (medium back buttons) 500 W x 460 D (medium 3 paddle)	Typist / Clerical 450 - 580 Drafting standard 560 - 760 Drafting high lift 630 - 890
OPTIONS	Option codes must be placed in alphabetical order after chair code.	A7 - Quasar arms A5 - Height adjustable arms B1 - Polished aluminium base C1 - Brake castors (carpet floors) C2 - Brake castors (hard floors)	C5 - Glides D1 - Aluminium footring /Standard drafting D2 - Aluminium footring /High Lift drafting D3 - Black plastic footring /Standard drafting D4 - Black plastic footring /High lift drafting	E - Ergosit seat cushion S2 - Optional Seat (500W x 460D) - 3 paddle S5 - Large seat (515W x 480D) S6 - Extra large seat (560W x 500D) SS - Slide seat option

OPTIONS

TASK RANGE

Option codes must be placed in alphabetical order after chair code.



A5
Height adjustable arm



A7
Loop arm



B1
Polished aluminium



C1
Brake castors



C2
Brake castors



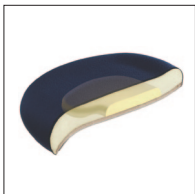
C5
Glides



D1 & D2
Aluminium footring



D3 & D4
Black plastic footring



E
Ergosit seat cushion



S2
Optional Seat (500W x 460D)



S5
Large seat (515W x 480D)



S6
Extra large seat
(560W x 500D)



SLIDE SEAT INSTRUCTIONS

The Slide Seat mechanism allows the seat to slide forward increasing the seat depth by 50mm. It offers 5 locking positions.

As depth between the back and seat increases it allows larger people more comfort.

To operate simply lift the handle and slide the seat forward or backward to adjust into a one of the 5 locking positions. The mechanism should find each locking position without any force necessary.

