

NORSE

www.sturdy.com.au

TASK RANGE

EXTRA HIGH BACK

NS40	non tilt seat
NS45	tilt seat
NS46	3 paddle mech

NS46M2S5 shown



HIGH BACK

NS30	non tilt seat
NS35	tilt seat
NS36	3 paddle mech

NS36M2 shown



MEDIUM BACK

NS20	non tilt seat
NS25	tilt seat
NS26	3 paddle mech

NS20 shown



A5
Height adjustable
arm



A14
Loop arms

DRAFTING

NS20D3	non tilt seat
NS26D3	3 paddle mech

NS20D3 shown



Approved Supplier
SCCB Contract No. 1006
20/10/2009 - 8/02/2013

L6



Not all models have
AFRDI certification.
AFRDI certifies for
select models available
upon request.

DIMENSIONS	Back Size	Seat Size	Height
	Extra high 495 W x 580 H High 444 W x 500 H Medium 435 W x 400 H	500 W x 460 D	Typist / Clerical 450 - 580 Drafting standard 560 - 760 Drafting high lift 630 - 890
OPTIONS	A14 - Standard loop arms A5 - Height adjustable arms B1 - Polished aluminium base C1 - Brake castors (carpet floors) C2 - Brake castors (hard floors)	C5 - Glides D1 - Aluminium footing / Standard drafting D2 - Aluminium footing / High Lift drafting D3 - Black plastic footing / Standard drafting D4 - Black plastic footing / High lift drafting	E - Ergosit seat cushion M2 - Ratchet back mechanism S5 - Large seat (515W x 480D) S6 - Extra large seat (560W x 500D) SS - Slide seat

When ordering option codes must be placed in alphabetical order after chair code

OPTIONS

TASK RANGE

When ordering option codes must be placed in alphabetical order after chair code



A5
Height adjustable arm



A14
Loop arm



B1
Polished aluminium



C1
Brake castors



C2
Brake castors



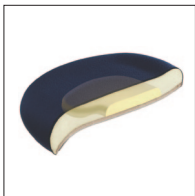
C5
Glides



D1 & D2
Aluminium footring



D3 & D4
Black plastic footring



E
Ergositt seat cushion



M2
Ratchet back mechanism



S5
Large seat (515W x 480D)



S6
Large seat (560W x 500D)



SLIDE SEAT INSTRUCTIONS

The Slide Seat mechanism allows the seat to slide forward increasing the seat depth by 50mm. It offers 5 locking positions.

As depth between the back and seat increases it allows larger people more comfort.

To operate simply lift the handle and slide the seat forward or backward to adjust to one of the 5 locking positions. The mechanism should find each locking position without any force necessary.

