

CALICE

TASK RANGE

HIGH BACK	
CA30	non tilt seat
CA36	3 paddle
CA39	syncro



CA30 shown



MEDIUM BACK	
CA20	non tilt seat
CA26	3 paddle
CA29	syncro



CA20 shown

MEDIUM / HIGH BACK WITH ARMS		
CA20A16	CA30A16	non tilt seat
CA26A16	CA36A16	3 paddle
CA29A16	CA39A16	syncro



CA20A16 shown



A5
Height adjustable

DRAFTING	
CA20D3	non tilt seat
CA26D3	3 paddle



CA20D3 shown



Approved Supplier
SCCB Contract No. 1006
20/10/2009 - 8/02/2013



Not all models have AFRDI certification. AFRDI certificates for select models available upon request.

DIMENSIONS	Back Size		Seat Size	Height	
	High	490 W x 500 H	500 W x 460 D	Typist / Clerical	450 - 580
Medium	480 W x 390 H	Drafting standard		560 - 760	
			Drafting high lift	630 - 890	
OPTIONS	A5 - Height adjustable arms A16 - Standard loop arms B1 - Polished aluminium base C1 - Brake castors (carpet floors) C2 - Brake castors (hard floors)		C5 - Glides D1 - Aluminium footring / Standard drafting D2 - Aluminium footring / High Lift drafting D3 - Black plastic footring / Standard drafting D4 - Black plastic footring / High lift drafting		E - Ergosit seat cushion S5 - Large seat (515W x 480D) S6 - Extra large seat (560W x 500D) SS - Slide seat
When ordering option codes must be placed in alphabetical order after chair code					

When ordering option codes must be placed in alphabetical order after chair code



A5
Height adjustable arm



A16
Loop arm



B1
Polished aluminium



C1
Brake castors



C2
Brake castors



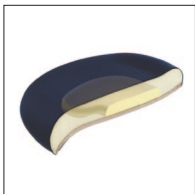
C5
Glides



D1 & D2
Aluminium footring



D3 & D4
Black plastic footring



E
Ergosit seat cushion



S5
Large seat (515W x 480D)



S6
Large seat (560W x 500D)



SLIDE SEAT INSTRUCTIONS

The Slide Seat mechanism allows the seat to slide forward increasing the seat depth by 50mm. It offers 5 locking positions.

As depth between the back and seat increases it allows larger people more comfort.

To operate simply lift the handle and slide the seat forward or backward to adjust into a one of the 5 locking positions. The mechanism should find each locking position without any force necessary.

